



Graduate School
HONG KONG SHUE YAN UNIVERSITY



CIEBPR

Centre for Interdisciplinary
Evidence-based Practice and Research

Centre for Interdisciplinary Evidence-Based Practice and Research
2022-2023 Wednesday Lunchtime Seminar Series

Robot for Autism Behavioral Intervention

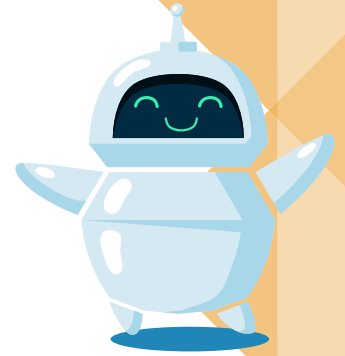
[26 April 2023 | 12:30 pm - 2:00 pm \(Hybrid Mode\)](#)



RHB 108, Research Complex, HKSU, 6 Wai Tsui Crescent,
Braemar Hill, Hong Kong



Zoom Meeting ID: 980 0989 5132



Speaker: Prof. Catherine So

In this presentation, I will introduce Robot for Autism Behavioral Intervention (RABI), a newly developed robot-based intervention, and summarize its effectiveness in enhancing social and behavioral skills in individuals with autism spectrum disorder (ASD). Since 2015, RABI has provided training in a plethora of social and behavioral skills, ranging from self-care and conversation, and vocational skills. Through deploying social robots, the RABI curriculum reduces autism severity and increases social and behavioral functioning. RABI was developed from the application of theories pertaining to the special learning needs of individuals with autism. Local and Macau non-government organizations and (mainstream/special) schools have adopted RABI to benefit their students. Their feedback includes “significant improvements in students’ verbal and non-verbal communication” and “generalization of acquired skills to students’ daily lives”. The government has also identified RABI as an innovative and successful intervention for autism. RABI is currently expanding via business and will be applied internationally.



Prof. Catherine So received her Ph.D. in Psychology at the University of Chicago in 2007. Then she took up the Assistant Professor Position at the National University of Singapore in 2007 and returned to Hong Kong in 2012. She is currently a Full Professor in the Department of Educational Psychology at the Chinese University of Hong Kong. Her research interests lie in language and gesture development of both typically and atypically developing children and intervention for autistic children. She has published over 50 journal articles and received local and international research and service awards.



REGISTER NOW

Chaired by Ms. Helen Kwok

Department of Counselling and Psychology
Hong Kong Shue Yan University